

# REUSE

in PGH



Pennsylvania  
Resources  
Council

A Pennsylvania where nothing is wasted





## What Is ReuseFest Boutique?

ReuseFest is a one-day drop off event open to the general public that diverts materials from local landfills to reuse by Pittsburgh nonprofits. It began in 2012 thanks to the generous support of the Sprout Fund and other local sponsors.

PRC collaborates with local nonprofits to provide the public with the opportunity to easily donate items that otherwise may have ended up in the trash. ReuseFest helps connect these usable materials with dedicated local nonprofits who find ways to give this material a second life while benefiting those in need. ReuseFest happens once a year, typically in the fall.



Pennsylvania  
Resources  
Council

A Pennsylvania where nothing is wasted

Pennsylvania Resources Council is a statewide environmental organization dedicated to the vision of a Pennsylvania where nothing is wasted. We steward resources to prevent waste and conserve the environment—building awareness, enabling action, and supporting systems change. [prc.org](http://prc.org), 412-488-7490. 12/2023

There's a lot of STUFF out there that we enjoy in our homes and lives, but often our interests change or we get new stuff we like better.

*Learn the art of reuse!*



Every decision about stuff in our lives has impact  
**Follow the five Rs to make less waste!**

**Refuse** (say no) and **reduce** the things you do need by investing in long-lasting quality, using up items completely and phasing out single-use items that have reusable alternatives.

**Reuse** stuff by buying secondhand, or donate or resell what you no longer need. *One person's trash is another person's treasure.* This step takes a bit of footwork but it's less wasteful—and kind!

**Repurpose** and **recycle** are two steps you might be able to take before throwing your stuff into the landfill. More on this on the last page of this zine!

# Regional Reuse Resources

Thank you for supporting our nonprofit partners.

Your donations...

- help low-income communities
- level the access to opportunity
- result in *less waste* by keeping useful items out of the landfill
- eliminate the need to buy something new, saving resources

**You can donate gently used, quality items for reuse year-round by contacting or visiting each organization in this guide.**

## SHOULD I DONATE THIS ITEM?

Before donating an item look at the condition and ask yourself, "Would I buy this item in its current condition?" It's okay to place stained, broken, cracked or otherwise damaged items in a trash can rather than donating to charity.



no cracks



no broken parts



no stains



**BROTHER'S BROTHER**  
FOUNDATION

Founded in Pittsburgh in the 1950s, BBF regularly schedules relief shipments and assistance around the world under the H.I.D.E. umbrella of Healthcare, Infrastructure, Disaster Response and Education.

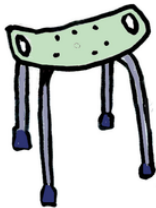
---

## DONATE



- durable medical equipment (walkers, wheelchairs, and hospital beds)
- school textbooks and school supplies
- unopened personal hygiene products (shampoo/conditioner, soap, adult diapers, menstrual products)

[brothersbrother.org](http://brothersbrother.org)  
412-321-3160  
1200 Galveston Ave.  
Pittsburgh





Located in the East End of Pittsburgh, Construction Junction is a nonprofit-run, 30,000 square foot reuse store focused on repurposing salvaged building materials, furniture and other home related items.

---

## DONATE

*See website for detailed list*

- wood furniture and cabinetry
- doors and windows
- lighting and plumbing
- vintage antiques
- architecture pieces
- tools
- lumber
- landscaping materials



[cjreuse.org](http://cjreuse.org)  
412-243-5025  
214 N Lexington St.  
Pittsburgh



Disability Options Network is a consumer controlled, nonprofit organization in western Pennsylvania. Their mission is to empower people with disabilities to live as independently as they choose in Allegheny, Armstrong, Beaver, Butler, Lawrence, Mercer and Westmoreland counties.

---

## DONATE



- durable medical equipment
- walkers, manual and power wheelchairs
- self care/bathing tools such as raised toilet seats, tub seats and benches
- reacher tools and any other equipment that promotes independence



831 Harrison Street  
New Castle, PA 16101  
724-652-5144  
[doninc.org/don](http://doninc.org/don)

East Gate Shopping Center  
5142 US 30 #155  
Greensburg, PA 15160  
724-936-3900

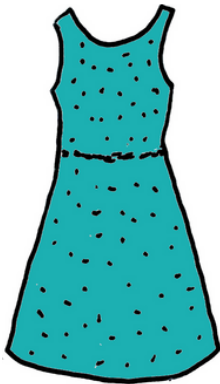


# DRESS FOR SUCCESS®

## PITTSBURGH

The Pittsburgh-area branches of the national nonprofit Dress for Success provide support, professional attire and development tools to empower women to achieve economic independence.

---



### DONATE

- like-new professional “ready to wear” attire
- shoes
- accessories
- unopened personal care products
- unopened makeup



[pittsburgh.dressforsuccess.org](http://pittsburgh.dressforsuccess.org)

Allegheny County Branch:

412-201-4204, 305 34th St., Pittsburgh

Also: Butler, Fayette and Washington Co. branches



# The EDUCATION Partnership™

A local Pittsburgh nonprofit that provides school supplies to students and their teachers in low-income schools in southwestern Pennsylvania. The Storehouse for Teachers located in the West End helps distribute school supplies. Donations help bridge the gap between what students have and what they need to succeed. Pre-K through 12th grade schools are served in eight counties.

---



## DONATE

- school supplies (crayons, pencils, paper reams, etc.)
- headphones
- bookcases and shelving
- office chairs
- desks and tables
- file cabinets
- computers, laptops, printers

[theeducationpartnership.org](http://theeducationpartnership.org)  
412-922-6500, 281 Corliss St.  
Pittsburgh



A collective of volunteers who love sustainability, the environment, education and bicycles who work to reroute used bikes from the landfill and fix them up to provide back to the community.

---

## DONATE

- adult and kid bikes, bike trailers
- bikes that need repair
- bicycle parts (wheels, chains, pedals, derailleurs, seats, brakes, and bicycle frames)
- bicycle accessories (water bottles, mirrors)
- bike shop tools and bike stands
- old towels, rags, cleaning supplies



[freeridepgh.org](http://freeridepgh.org)  
412-731-2474  
214 N Lexington St.  
Pittsburgh



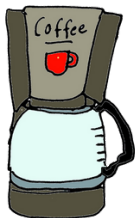
Founded in 2015, FreeStore Wilkinsburg redistributes new and lightly used donated goods to residents to provide basic needs and create stability and self-reliance. FSW is community-led organization that has relied entirely on volunteer staff and donations from residents and corporations.

---

## DONATE

*Check online list of accepted items*

- in-style and current season clothes and shoes
- linens, bedding, towels
- dishes, kitchen items
- working small appliances
- baby and infant items
- unopened toiletries



[freestorewilkinsburg.org](http://freestorewilkinsburg.org)

412-436-9836

619 Penn Ave

Wilkinsburg



Covering eight counties in southwestern Pennsylvania (Allegheny, Armstrong, Butler, Beaver, Fayette, Greene, Washington and Westmoreland), Goodwill International's mission is to help people overcome barriers to employment and enjoy the benefits of work and improved quality of life. 90% of the revenue collected from their 30 local area thrift stores support job training and employment programs.

---

## DONATE

*At Goodwill stores and collection sites*

- clothing and accessories
- books and media
- furniture
- household goods
- home décor
- area rugs and lamps
- working small appliances
- computers and accessories



[goodwillswpa.org](http://goodwillswpa.org)  
412-632-1800



Through the Restore, operated by Pittsburgh's local branch of Habitat for Humanity, all sale proceeds benefit local families with stability and self-reliance through home ownership and home repair programs.

---

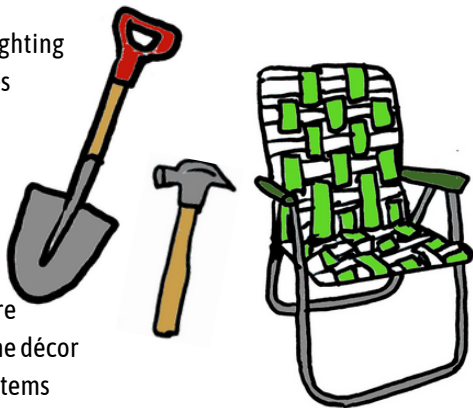
## DONATE

- appliances
- building materials
- cabinets
- ceiling fans and lighting
- plumbing supplies
- roofing materials
- sinks and fixtures
- unused lumber
- windows
- HVAC
- tools and hardware
- furniture and home décor
- lawn and garden items

[habitatpittsburgh.org/restore](http://habitatpittsburgh.org/restore)

412-244-7100

Swissvale Shopping Center  
7402 Church St., Pittsburgh





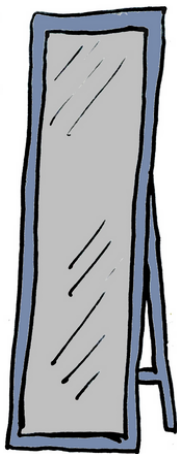
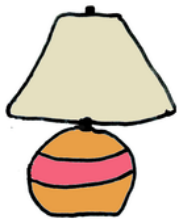
# Off the Floor Pittsburgh Furniture Bank

Since 2004, this faith-based nonprofit operates a furniture bank that provides basic used furniture such as beds, tables and chairs to southwestern Pennsylvanian disadvantaged families. Furniture is picked up and delivered directly (there is no storefront location).

---

## DONATE

*Check online list of accepted items*



- living room furniture
- dining room furniture
- bedroom furniture
- clean sheets
- lamps

[offthefloorpgh.org](http://offthefloorpgh.org)

412-926-5053

[info@offthefloorpgh.org](mailto:info@offthefloorpgh.org)



## Society of St. Vincent de Paul Council of Pittsburgh

St. Vincent de Paul operates five Pittsburgh-area thrift stores in Castle Shannon, Coraopolis, Monroeville, Penn Hills and Butler, as well as an online store. Founded in 1833, this nonprofit council serves 10,000 local individuals annually through direct services that include providing clothing, furniture, housing, utility assistance, food, medical care and transportation.

---

### DONATE

*At St. Vincent de Paul thrift stores*

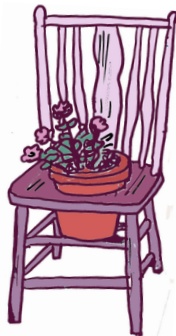
- clothing and accessories
- furniture (couches, chairs, tables, dressers)
- toys and games
- audio media (records, CDs, DVDs)
- books
- small kitchen appliances
- home décor
- framed artwork

[svdppitt.org](http://svdppitt.org)  
412-321-1071



# Repurposing

Broken, stained, and cracked items may not be suitable for reuse, but they can sometimes be adapted and **repurposed**. Another name for this is **creative reuse**. Old clothes can become rags or costumes, a chipped plate can become a beautiful mosaic tile and broken furniture can have a new life as a unique plant stand!



## **Need more ideas?**

Search "creative reuse" online or at your library!

# Recycling

Curbside recycling is meant for everyday products, like the glass jars or metal cans from our food packaging, but there are specialty recyclers in the region. If the item is mostly made of metal, it may be of interest to a metal scrapper. Flat glass from windows or tabletops may be recycled at Dlubak Glass in Natrona Heights ([dlubak.com/pennsylvania](http://dlubak.com/pennsylvania))



Pennsylvania  
Resources  
Council

2023. Illustrations by Carye Bye

[prc.org/reusefest](http://prc.org/reusefest)

A Pennsylvania where nothing is wasted